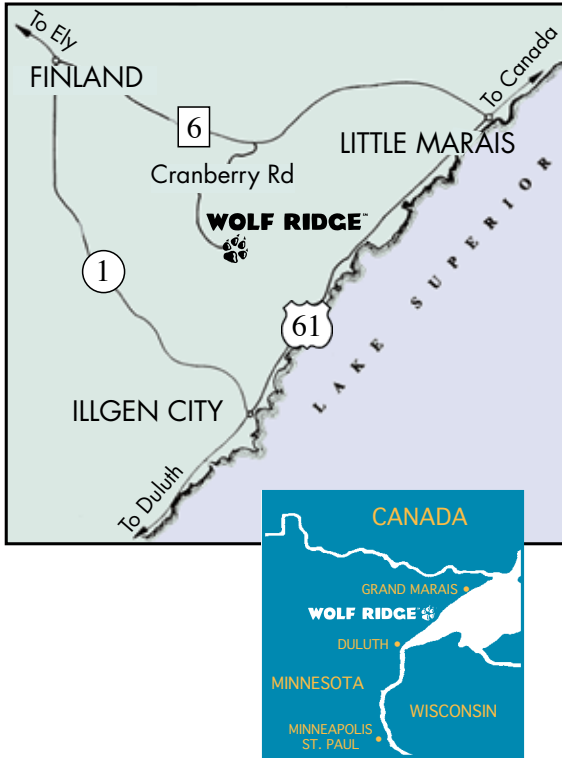
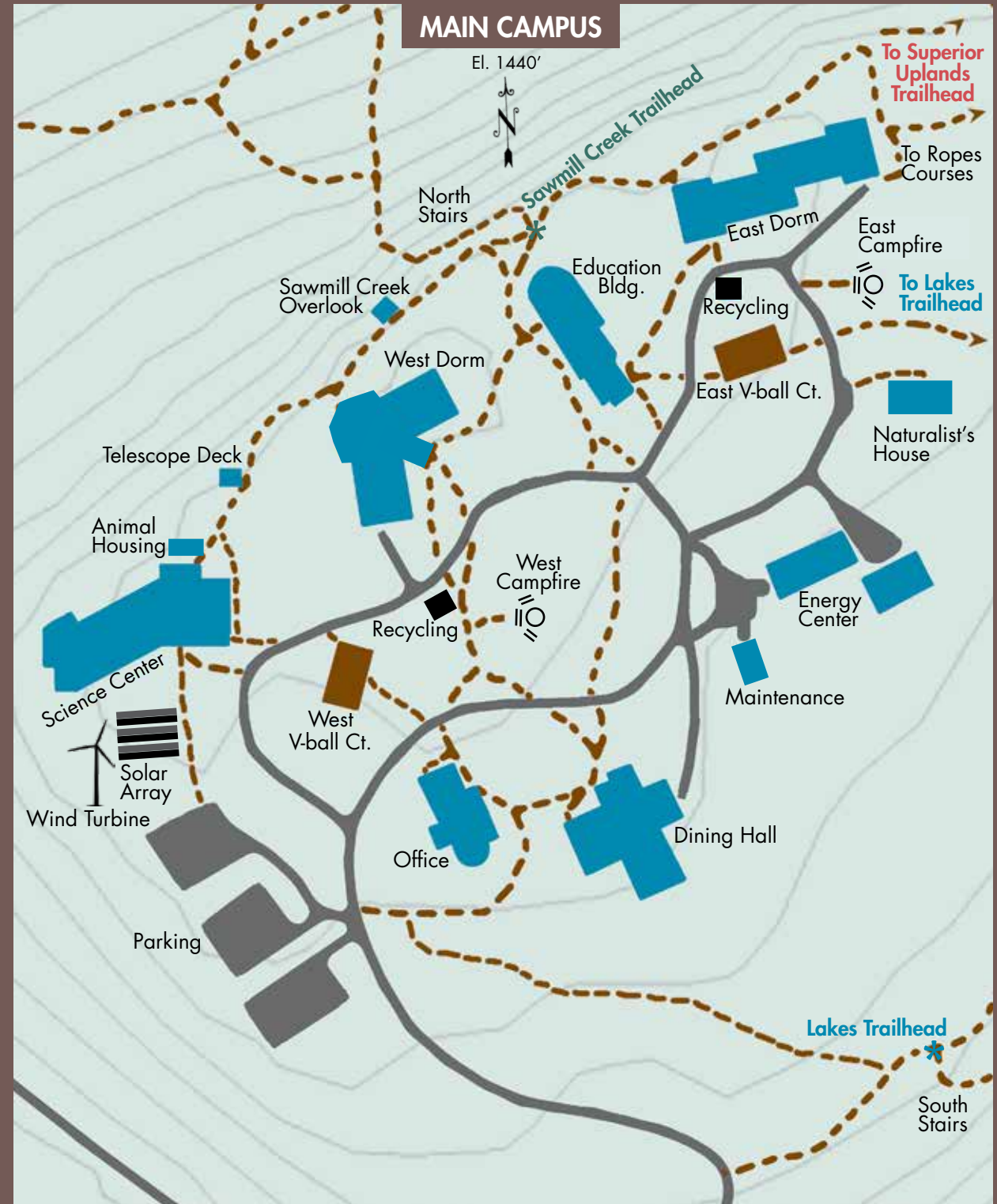


DIRECTIONS TO WOLF RIDGE

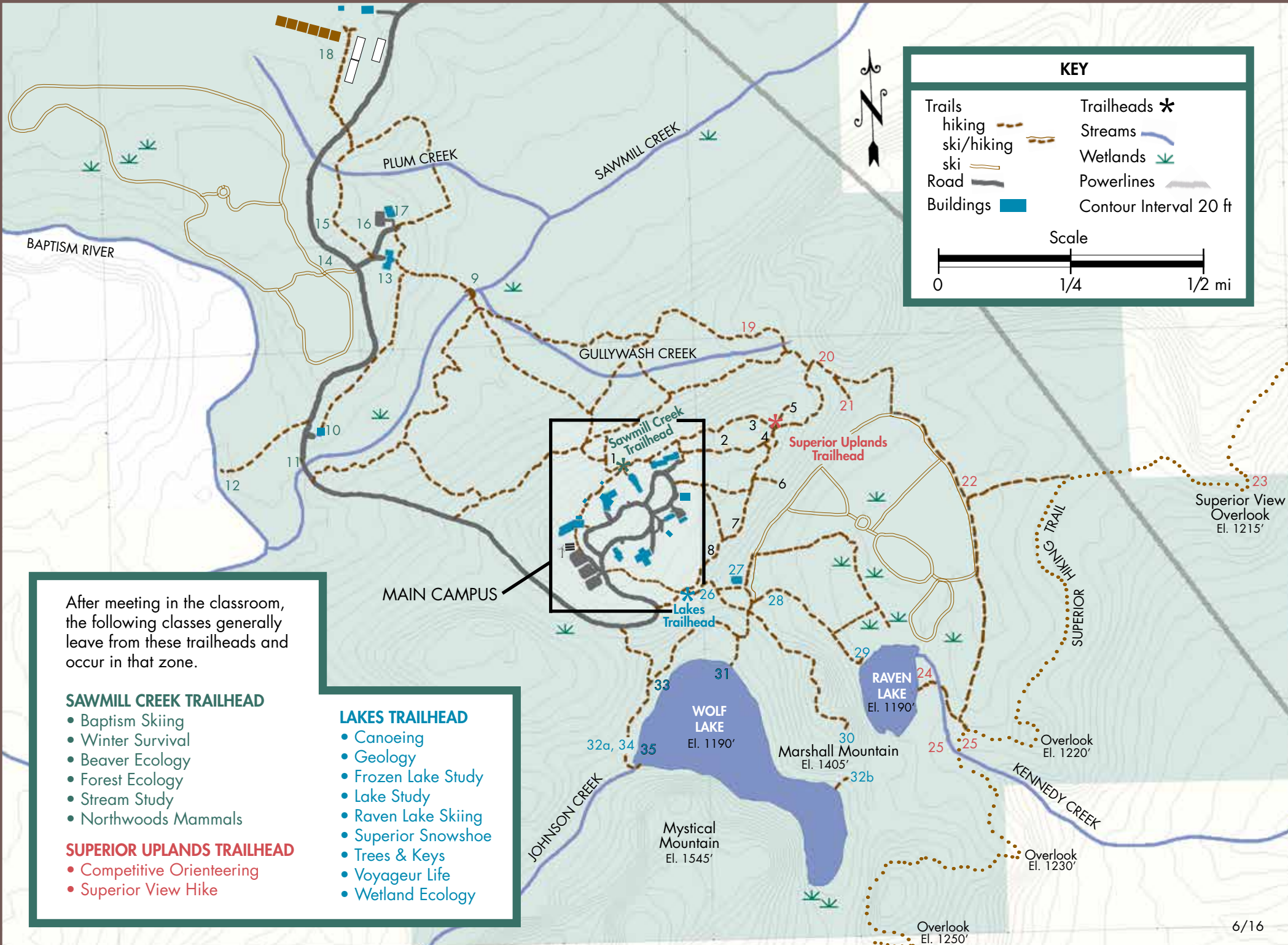
Wolf Ridge is 250 miles north of Minneapolis/St. Paul and 70 miles northeast of Duluth. Follow Hwy 61 northeast from Duluth to milepost 65 at Little Marais. Turn left on Cty Rd 6 for 5 miles to Wolf Ridge. Our driveway, Cranberry Rd, is on the left and winds for 3 miles up to the main campus.



6282 Cranberry Rd
 Finland, MN 55603
 800-523-2733 (MN, WI, ND)
 (218) 353-7414
wolf-ridge.org



 Our mission is to develop a citizenry that has the knowledge, skills, motivation, and commitment to act together for a quality environment.



1. North Stairs
2. Field
3. Ridgetop Ropes
4. Skyview Ropes
5. Birch Ojibwe
6. Spruce Ojibwe
7. Chickadee Landing
8. Storyteller's Tent
9. Sawmill Creek Bridge
10. Stream Study Bldg
11. Stream Study Site
12. Baptism Campsite (WR)
13. Forest Ecology Bldg
14. Baptism Ski Trailhead
15. White Pine Deer Enclosure
16. Bus Parking
17. Truck Garage
18. Organic Farm
19. 1905 Homestead Site
20. Competitive Orienteering
21. Valley Orienteering
22. Old Car
23. Superior View Overlook
24. Raven Campsite (WR)
25. Superior Hiking Trail Campsites (public)
26. South Stairs
27. Ski Chalet/Wetland Bldg.
28. Trees & Keys Start
29. Raven Lake Canoes
30. Marshall Mt.
31. Voyageur Canoes
- 32a. Voyageur Site - Nov. to May
- 32b. Voyageur Site - May to Nov.
33. Wolf Lake Canoes
34. Lake Study Site
35. Swim Area

After meeting in the classroom, the following classes generally leave from these trailheads and occur in that zone.

SAWMILL CREEK TRAILHEAD

- Baptism Skiing
- Winter Survival
- Beaver Ecology
- Forest Ecology
- Stream Study
- Northwoods Mammals

SUPERIOR UPLANDS TRAILHEAD

- Competitive Orienteering
- Superior View Hike

LAKES TRAILHEAD

- Canoeing
- Geology
- Frozen Lake Study
- Lake Study
- Raven Lake Skiing
- Superior Snowshoe
- Trees & Keys
- Voyageur Life
- Wetland Ecology

MAIN CAMPUS